

Specifications

Nominal Voltage	12V	
Nominal Capacity	104AH	20HR (1.75V/cell)
Dimension	Length	325mm (12.8 inches)
	Width	170mm (6.69 inches)
	Height	213mm (8.39 inches)
	Total Height (with Terminal)	216mm (8.50 inches)
Approximate Weight	31.48 kg (69.40 lbs)	
Battery Type	Valve Regulated Lead-Acid Battery, AGM Design	
Terminal Type	IT	
Max. Discharge Current	1650A	
Internal Resistance	3.6mΩ	
Conductance Value	1550S	
Operating Temp. Range	Discharge:	-15°C (5°F)~50°C (122°F)
	Charge:	0°C (32°F)~40°C (104°F)
	Storage:	-15°C (5°F)~40°C (104°F)
Nominal Operating Temp. Range	25±3°C (77±5°F)	
Acceptable Float Voltage Range	13.5V-13.8V at 25°C (77°F)	
Container Material	ABS (UL94 V-0) flame retardant case	
Self Discharge	≤ 3% of capacity declined per month at 25°C (77°F)	



Applications

- Uninterruptible Power Supply (UPS)
- Emergency power supply
- Emergency lighting
- Electronic apparatus and equipment
- Solar power systems



Constant Current Discharge (Amperes Per Battery) at 25°C (77°F)

F.V. (V/cell) \ Discharge Time	5min	10min	15min	30min	1h	2h	3h	5h	8h	10h	20h
1.60V	372.2	264.8	220.6	131.0	71.2	39.7	28.9	18.9	12.6	10.3	5.33
1.67V	355.1	254.1	214.0	128.3	70.3	39.0	28.4	18.7	12.5	10.1	5.30
1.70V	324.7	239.6	203.6	124.0	68.2	37.9	27.6	18.2	12.2	10.0	5.26
1.75V	297.0	225.1	193.1	119.2	65.5	36.5	26.8	17.9	12.0	9.81	5.20
1.80V	264.0	204.6	179.2	112.4	62.5	35.2	26.0	17.5	11.7	9.60	5.08
1.85V	222.1	179.5	161.7	104.9	59.9	33.8	25.0	16.8	11.4	9.37	4.94

Constant Power Discharge (Watts Per Cell) at 25°C (77°F)

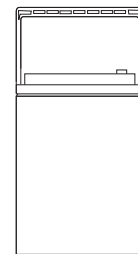
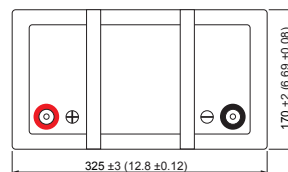
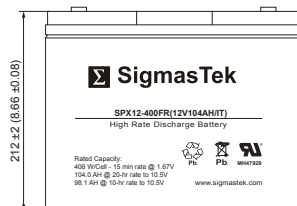
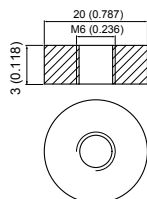
F.V. (V/cell) \ Discharge Time	5min	10min	15min	30min	1h	2h	3h	5h	8h	10h	20h
1.60V	687.7	493.2	413.8	249.4	137.5	77.1	56.5	37.3	25.0	20.4	10.7
1.67V	663.5	478.4	405.7	246.7	137.0	76.5	55.9	37.2	25.0	20.4	10.7
1.70V	611.7	454.5	388.4	239.7	133.7	74.7	54.8	36.4	24.6	20.2	10.7
1.75V	565.9	431.7	372.8	232.8	129.4	72.5	53.4	35.9	24.4	20.0	10.6
1.80V	508.2	396.2	349.0	221.4	124.3	70.4	52.2	35.3	23.9	19.7	10.4
1.85V	432.2	351.1	318.1	208.6	120.0	68.1	50.4	34.2	23.4	19.3	10.2

Dimensions

IT Terminal

Unit: mm (inches)

Torque: 48 inch-pounds



Contact Information

SigmasTek
105 East 34th Street, Suite 257
New York, NY 10016, USA

T: 800-404-3475
F: 877-661-7089
www.sigmastek.com